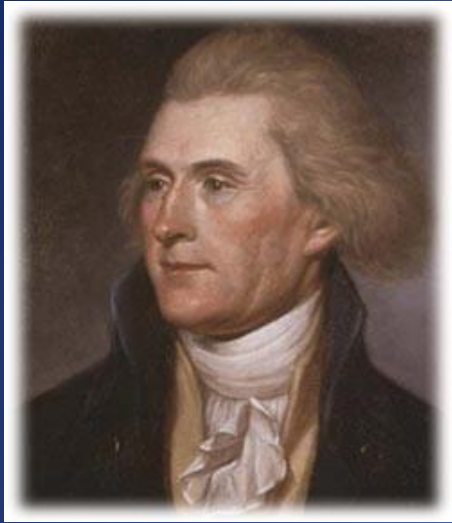




Make a Difference...join the WSLCA



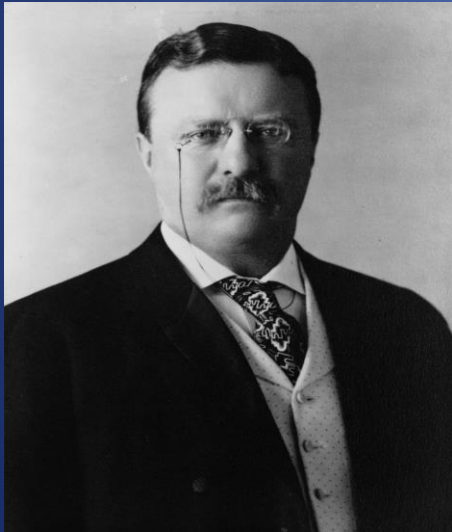
School Trust Land Beginnings



Thomas Jefferson had the idea...

Theodore Roosevelt made it a reality

**Education for all the children of the United States
is the key to creating a strong democracy**



- **Jefferson's idea** - Fund education by using income from land to supplement public school funding.
- **Roosevelt took it a step further** - Created the program that required the new territories, the territories seeking statehood, to receive land to help fund education.

School Trust Lands ARE NOT Public Lands or Parks

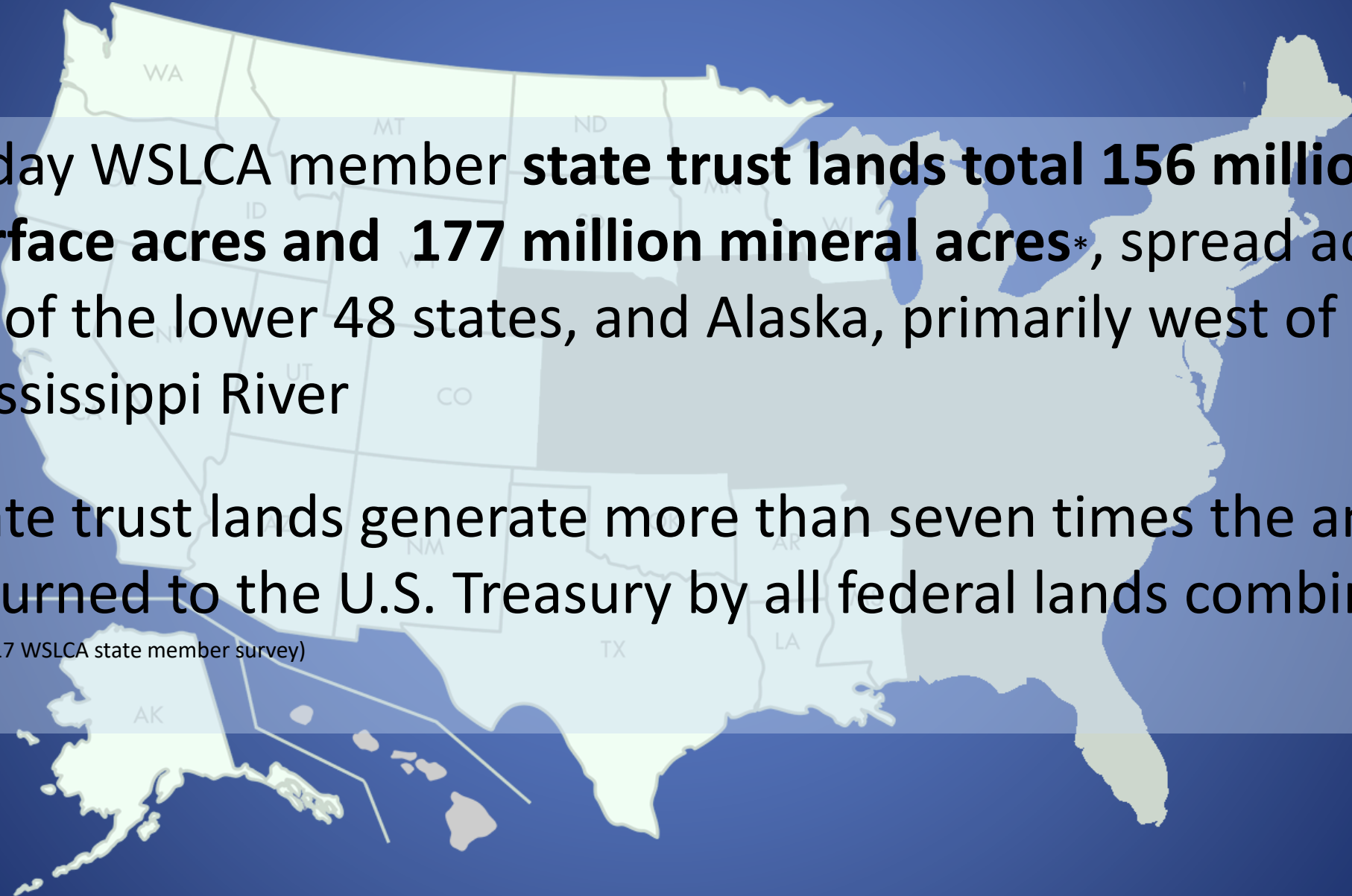
- State Enabling Acts and State Constitutions often label all lands as public trust land thus, leading to confusion regarding purpose, use and benefit of certain types of land.
- **State trust lands are not “public lands” in the same sense as national parks and forests.** Instead, they are managed by a board of trustees within each state, and for clearly specified beneficiaries, principally the common schools.



State Trust Lands vs. Federal Lands

- Today WSLCA member **state trust lands total 156 million surface acres and 177 million mineral acres***, spread across 21 of the lower 48 states, and Alaska, primarily west of the Mississippi River
- State trust lands generate more than seven times the amount returned to the U.S. Treasury by all federal lands combined.

*(source: 2017 WSLCA state member survey)



Who are State Trust Land Beneficiaries

Each state Constitution prescribes the beneficiaries that receive earnings from trust lands:

- The **largest beneficiary** and the majority of all earnings is to common schools (**k-12**).
- In most western states higher education institutions are also beneficiaries and receive revenues from quantity grants



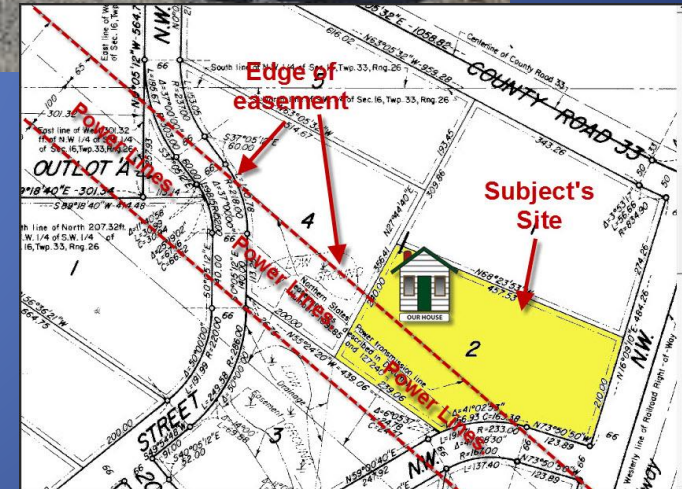
How Is Revenue Earned for Beneficiaries?

- Income from **agricultural leases**
- Income from **timber harvest contracts**
- Income from **commercial leases**
- Income from **mineral and petroleum extraction**
- **Interest earnings** from bonds
- **Dividend income** from equities
- **Sale of energy production**



Additional Trust Land Uses

- Rights-of-way (pipelines, roadways)
- Water easements for well placement and water leases
- Saltwater disposal units
- Wind and solar farms
- Recreational & special use permits
- CO2 leases and geothermal leases



WSLCA Quick Facts




22,043,613 STUDENTS SERVED 

 **515** MILLION ACRES  **30,000** ACTIVE OIL & GAS WELLS

\$140 BILLION IN PERMANENT TRUST FUNDS
NEARLY \$3 BILLION DISTRIBUTED IN FY17



 **MORE THAN 80,000** NEW HOMES BUILT ANNUALLY FROM SUSTAINABLE TIMBER HARVEST

 **1,040,125** SQ. MILES NAVIGABLE WATERWAYS



36 MILLION RANGE AND AGRICULTURE ACRES

WSLCA STATES CONTRIBUTE UP TO 10% OF THEIR EDUCATION BUDGETS 

Become a WSLCA member...make a difference

- **The WSLCA is more than states!**

We value participation from business, industry and non-profit organizations who help develop our resources, provide outreach to the public and who support our mission to help states fund education.

- **Members Share Knowledge and Expertise:**

- Banking and institutional investment
- Technology and tools (GIS layers, accounting software, purchasing)
- Leadership and executive C-suite training
- Professional and technical natural resource staff training
- Sharing and branding best practices
- Modernizing regulations and business practices



Enduring Sponsorship & Member Programs with the WSLCA

- **Conference and web events help WSLCA members share and grow professionally**
 - Annual summer conference is July 8-12, 2018 in Duluth, MN
 - Mentor the next generation Student Scholarships to attend conference
 - Variety of sponsor and participation levels www.wslca.org
- **Basic Affiliate membership - \$3,000/year**
 - Dialog and participate in strategic initiatives covering a variety of industries, develop best practice, work together on professional training content and delivery.
 - WSLCA is a 501(c)3 non-profit so all donations are tax deductible.

Thank You Trimble!



Please visit the WSLCA website to learn more:

www.wslca.org

Or contact our Executive Director

Kathy Opp ~ 208-870-7407

kathyjopp@gmail.com

