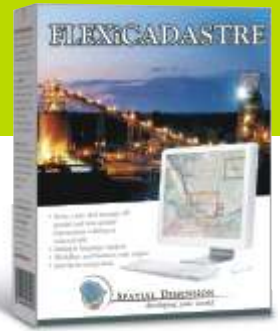


FLEXICADASTRE



INTEGRATED MINERAL RIGHTS MANAGEMENT SOLUTION

FlexiCadastrE uses a business rule and workflow-centric approach to facilitate the efficient administration of mineral title in multiple or single jurisdictions. Using a web portal for data management and reporting, advanced task management, configurable business logic, best of breed GIS technologies and innovative concepts, FlexiCadastrE is a world leader in mineral rights management solutions.

KEY FEATURES

- Store, view and manage all spatial and non-spatial information relating to mineral title
- Record, track, manage, alert and report on the application, renewal, payments, work commitments and obligations
- Store, view and manage all spatial and non-spatial information relating third party agreements (JV's, CA's, Farm In/Outs etc)
- Record, track, manage, alert and report on options, payments, work commitments and obligations required by third party agreements
- Personalised work diary showing upcoming tasks for different users with Email and SMS work flow escalation
- Automatic generation a range of required statutory documents and reports
- Automatic spatial verification of license coordinates, area and availability according to mining law and corporate policies
- Full history and audit functionality for compliance monitoring
- Multiple language support
- Web based and developed in ASP.NET

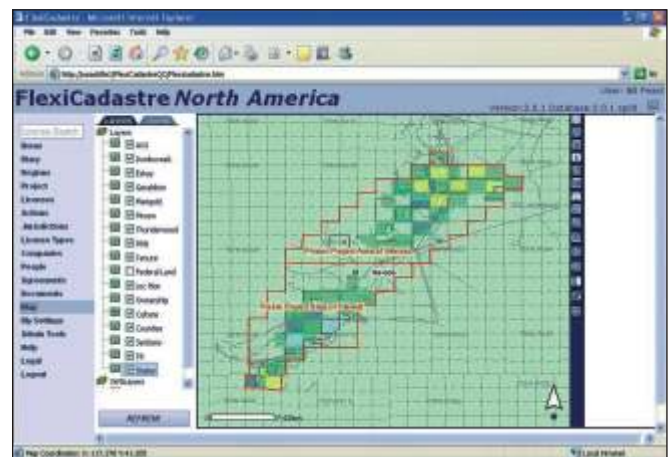


WORKFLOW AND BUSINESS RULE ENGINE

- Workflow-centric and task based approach
- Customisable rules and workflow logic based on mining law and regulations for each jurisdiction and/or business processes
- Complete client side workflow editing tools to configure the workflow rules and business logic

ENTERPRISE INTEGRATION

- Integration with Active Directory for single authentication and security model
- Integration with server based GIS technology for integrated spatial data management, analysis and visualisation
- Integration with Enterprise Resource Planning (ERP) systems for financial and work commitment reporting
- Integration with Document Management Solutions (DMS) for associated documents
- Extract, Transform and Load (ETL) tools to import data from third party systems



IMPLEMENTATION CLIENTS

- Anglo American
- Barrick Gold
- BHP Billiton
- Bureau of Minerals and Petroleum, Greenland
- Cadastre Minier, Democratic Republic of Congo
- Department of Minerals and Energy, South Africa
- Ministry of Energy and Minerals, Tanzania
- Ministry of Mineral and Energy Resources, Mozambique
- Ministry of Mines and Energy, Ethiopia
- Ministry of Mines and Minerals Development, Zambia
- Rio Tinto
- Department of Minerals and Energy, South Africa



SPATIAL DIMENSION
developing your world

An MS Group Business

Unit 5, Technosquare
42 Morningside Rd, N'Dabeni, 7405
PO Box 38668, Pinelands, 7430
Cape Town, South Africa
Tel: +27 21 531 3132
Fax: +27 21 532 0369
info@spatialdimension.com
www.spatialdimension.com