

SDeXplore



FIELD EXPLORATION MANAGEMENT SOFTWARE

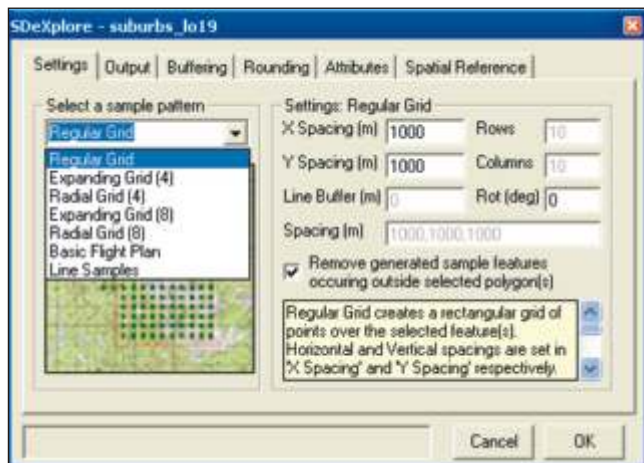
SDeXplore is a suite ArcGIS tools to aid the design, planning and execution of mineral exploration field projects. It includes tools for sample location and flight line creation as well as advanced buffering and rounding tools.

SDeXplore KEY FEATURES

- Advanced sampling grid generator
- Flight line generator
- Export to GPS waypoint files
- Full ArcPad integration

SAMPLE GENERATOR

The Sample Generator provides the user with a number of options for generating field sample locations, including options for different sampling patterns, labelling and buffering from existing features such as rivers, roads or existing samples. Standard templates can be used to insure all datasets have the common fields, domains and subtypes.



Sample patterns supported include:

- Regular grids
- Radial grids
- Expanding grids
- Samples along linear features
- Flight lines

Advanced options available to all sample patterns include:

- Rotation of grids and lines
- Including or excluding samples and lines based on buffers results
- Advanced rounding of sample locations
- Use of templates to define required attributes in resultant datasets

All information is thoroughly verified by the system to ensure that all sample numbers, spatial information and projection data is contextually correct and valid.

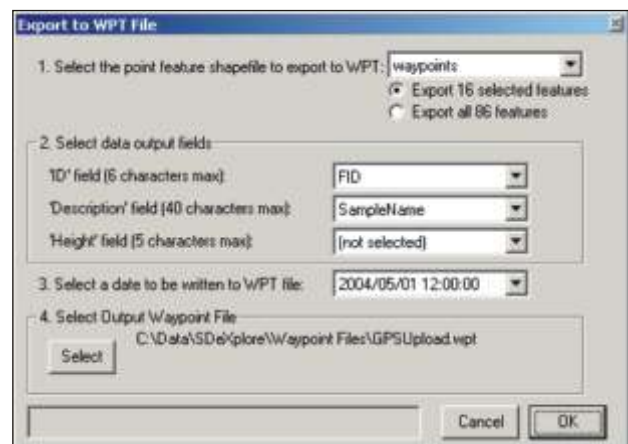
ARCPAD FIELD SOFTWARE

Once the sample data has been generated it can be exported to ESRI's ArcPad. Detailed sampling information can then be collected using customised data capture forms. Field teams are then able to capture all relevant information regarding a sample, using drop down boxes in ArcPad to ensure consistency.

The locational data is incorporated with the sample information and can be directly updated through SDeXplore to the Corporate Exploration Database. This method of data collection promotes standardised data collection and leaves little room for human error in data collection or coordinate calculation.

GPS WAYPOINT FILE EXPORT

SDeXplore includes full support for the Garmin waypoint file format (.wpt). This allows for seamless integration of the data created using SDeXplore to the GPS used in the field.



Success Stories

The use of SDeXplore has resulted in significant time savings and a reduction of operational costs in a number of international mining companies including **Anglo Platinum, CVRD, De Beers and BHP Billiton.**



SPATIAL DIMENSION
developing your world

An MS Group Business

Unit 5, Technosquare
42 Morningside Rd, N'Dabeni, 7405
PO Box 38668, Pinelands, 7430
Cape Town, South Africa
Tel: +27 21 531 3132
Fax: +27 21 532 0369
info@spatialdimension.com
www.spatialdimension.com