

PARAMETER VALUES

- Used by Business Rules
- Scheduling Payments
- Allows for variations within a single Rule

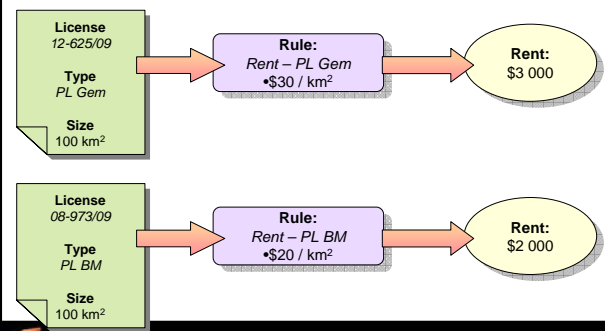
PARAMETER VALUES

- Rent that varies Regionally
 - Input: License Region
- Rent based on government defined 'unit', revised annually
 - Input: Action Due Date
- Fees that vary according to Mineral Resource
 - Input: License Resources

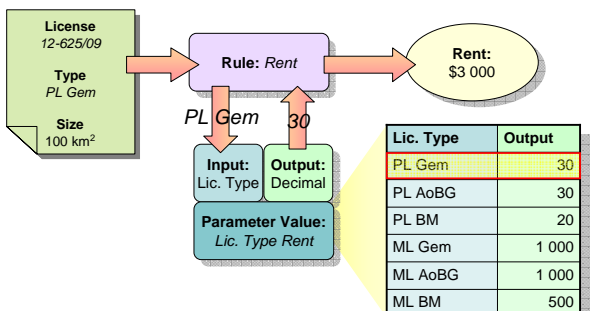
PARAMETER VALUES

- Scenario:
 - Calculating Rent for Tanzanian Prospecting Licenses
 - Rent varies with Resource
 - **Gem**: Gemstones
 - **BM**: Building Materials
 - **AoBG**: ALL other than Building Materials & Gemstones

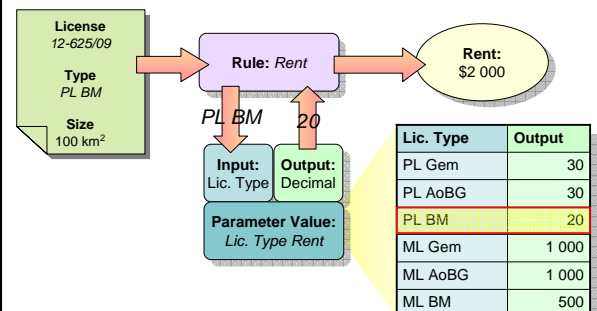
PARAMETER VALUES



PARAMETER VALUES



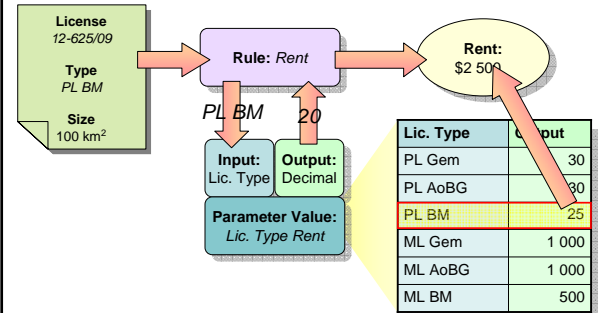
PARAMETER VALUES



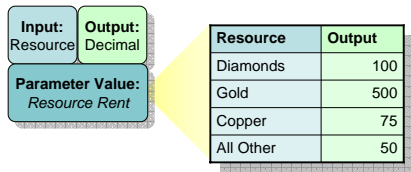
PARAMETER VALUES

- Editing:
- Easy to update values without editing the Business Rule
- Changes take immediate effect for new Actions
- Optionally applied retroactively to existing Actions

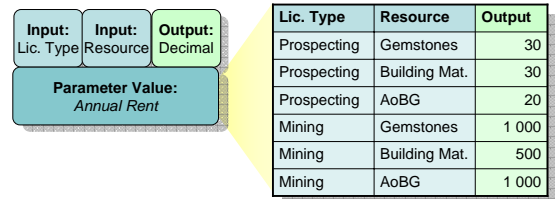
PARAMETER VALUES



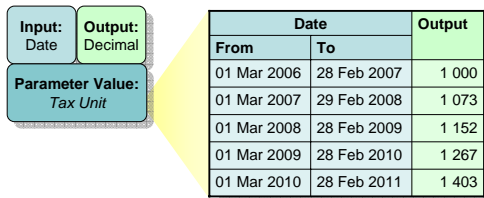
PARAMETER VALUES



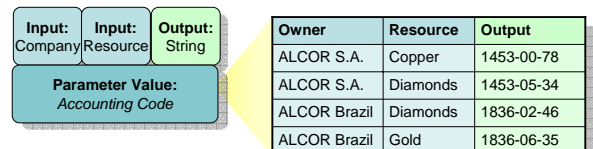
PARAMETER VALUES



PARAMETER VALUES



PARAMETER VALUES



DEMONSTRATION

PARAMETER VALUES

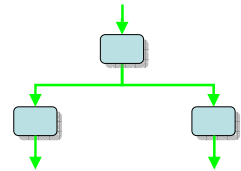
DECISION ACTIONS

DECISION ACTIONS

- New Action Type Group: **Decision**
- Used to control Workflow
- Allows a workflow to split in many directions

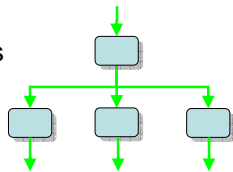
DECISION ACTIONS

- Previously flow was controlled by closing Actions **Successfully** or **Unsuccessfully**
- Not intuitive
- Workflow could only split in 2 directions



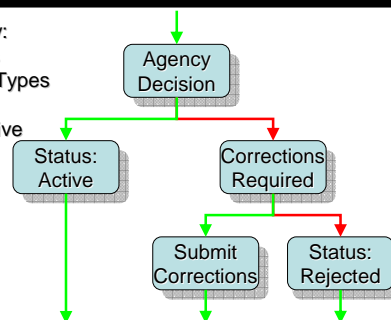
DECISION ACTIONS

- Now flow can be controlled with a Decision
- Explicit Decision Results
- Workflow can be split in many directions



DECISION ACTIONS

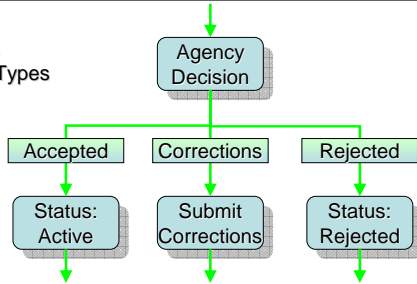
- Previously:
- 3 Results
 - 5 Action Types
 - 4 Rules
 - Not Intuitive



DECISION ACTIONS

Now:

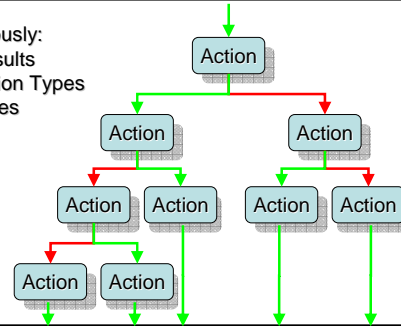
- 3 Results
- 4 Action Types
- 3 Rules
- Intuitive



DECISION ACTIONS

Previously:

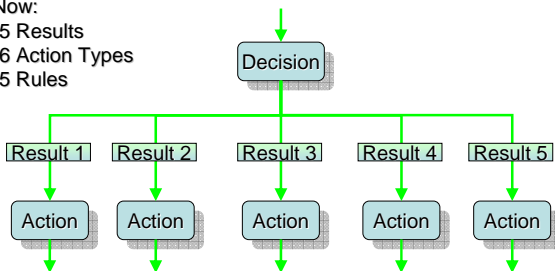
- 5 Results
- 9 Action Types
- 8 Rules



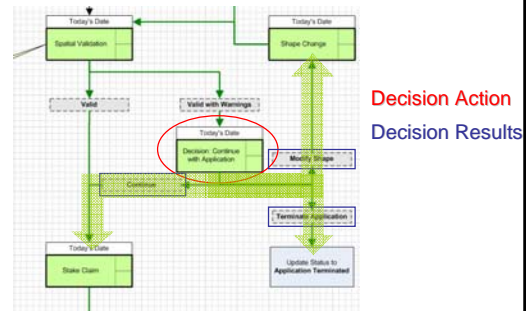
DECISION ACTIONS

Now:

- 5 Results
- 6 Action Types
- 5 Rules



DECISION ACTIONS



DECISION ACTIONS

- Administrator:
- Many Decision Action Types can be configured
- Each with appropriate Results
- Example:
 - Action Type: **Agency Decision**
 - Result: **Accepted**
 - Result: **Corrections Required**
 - Result: **Rejected**

DECISION ACTIONS

- User:
- Action Interface provides drop-down to select correct Result

DEMONSTRATION

DECISION ACTIONS



THANK YOU

