

# MetaTools for ArcGIS



## Spatial Dimension's MetaTools for ArcGIS

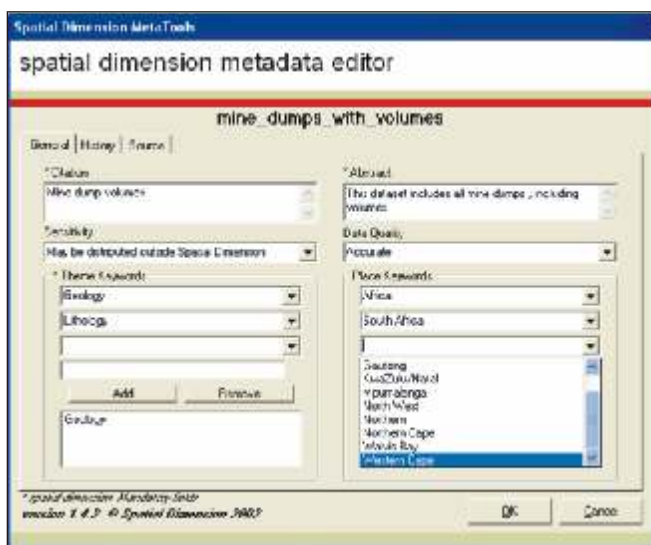
Spatial Dimension's MetaTools is a suite of tools designed to aid the management of metadata in ArcGIS. It includes tools for batch dataset maintenance and is widely used in the Mineral Resource Sector.

### INTRODUCTION

Spatial Dimension's MetaTools is a suite of tools designed to aid the capture, viewing and searching of metadata in ArcGIS. It contains batch dataset maintenance tools such as batch spatial reference information assignment, batch dataset renaming, batch thumbnail creation and batch raster pyramid creation. The tool integrates seamlessly into the ArcCatalog and ArcMap environments, allowing users to easily manage all ArcGIS supported data types.

### Metadata Editor

MetaTools contains a customised metadata editor to capture metadata for individual or multiple datasets. A selected subset of FGDC and ISO metadata fields are presented to the user and metadata fields are grouped logically to aid ease of capture. Metadata fields that extend the FGDC and ISO standards have been added. Lookup tables are used to ensure consistent data capture throughout an organisation.



### Metadata Viewer

Metadata created using MetaTools can be viewed in any of the default metadata stylesheets such as the FGDC or ISO stylesheets. MetaTools includes a customised stylesheet that presents metadata in an easy to understand format.

### Metadata Search

The MetaTools metadata search tool integrates with the ArcCatalog search tool, allowing one to search on the same metadata fields, using the same lookup tables defined in the MetaTools metadata editor.

### Dataset Renaming

MetaTools contains various tools to rename datasets, individually or in batch. These include functionality to append text to the beginning or end of file names and can also perform a "Find and Replace" on multiple file names.

### Projection (.prj) Files for ArcGIS Datasets

ArcGIS datasets store spatial reference information. This information allows datasets to be reprojected on-the-fly in ArcMap. MetaTools can assign projection (.prj) files to multiple datasets in batch.

### Pyramids for Raster Datasets

When pyramids have been created for raster datasets, they can be rendered quickly at various zoom levels. By default, ArcGIS creates pyramids the first time a raster dataset is loaded. This process is however time consuming. MetaTools allows for the batch creation of pyramids for multiple raster datasets, averting the need to wait a long time while the raster dataset loads for the first time.

### Thumbnails for ArcGIS Datasets

ArcCatalog features a thumbnail view for browsing datasets. ArcCatalog is, however, only able to create thumbnails for one dataset at a time. MetaTools saves time by allowing you to create thumbnails in batch.

### Success Stories

MetaTools is widely used in the Mineral Resource Sector including such groups as **Barrick Gold**, **BHP Billiton** and **Gold Fields**.



**SPATIAL DIMENSION**  
developing your world

An MS Group Business

Unit 5, Technosquare  
42 Morningside Rd, N'Dabeni, 7405  
PO Box 38668, Pinelands, 7430  
Cape Town, South Africa  
Tel: +27 21 531 3132  
Fax: +27 21 532 0369  
info@spatialdimension.com  
www.spatialdimension.com