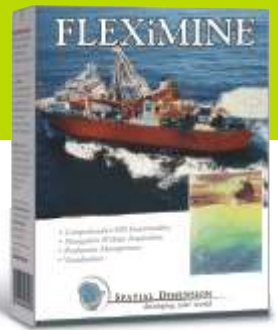


FLEXiMINE

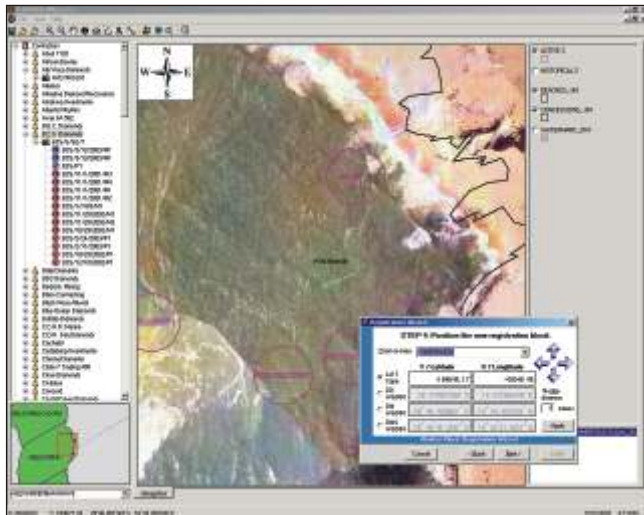


THE INTEGRATED OFFSHORE DIAMOND MINING SYSTEM

FLEXiMINE uses an integrated approach to offshore diamond mining management. It leverages the power of GIS to increase operational performance and efficiency. FLEXiMINE combines a spatially enabled database with available geographic datasets, navigation, data acquisition, diamond production management, planning, reporting and advanced visualisation tools.

COMPREHENSIVE GIS FUNCTIONALITY

- Support for a wide range of image and vector data formats.
- Comprehensive projection and datum support.
- On the fly reprojection of multiple datasets to a common projection.
- Comprehensive range of GIS functions.
- Thematic mapping and labeling.
- Survey, sampling and mine planning tools.
- Open connectivity through any standard database format.
- GIS data creation and editing tools.



NAVIGATION & DATA ACQUISITION

- Intelligent navigation through an integrated GIS interface.
- Generic serial device support enables multiple connections to maritime devices.
- Vessel dimensions and offset management.
- Navigation alarms for shallow water or danger zones.
- Full data editing and quality control and assurance.
- Comprehensive data processing and presentation.

PRODUCTION MANAGEMENT

- Includes a wide range of customised reporting functionality, including map based reports and graphing.
- Production, mining delays, vessel consumption, and environmental reports.
- Multiple vessel tracking for contractor management.
- Automatic cellular Short Message Service (SMS) reports to managers.
- Data verification and validation rules.
- User level security for increased data integrity.
- Optimised for multi-user environment on larger vessels.

VISUALISATION

- Real time navigation and production visualisation through an integrated GIS interface.
- Area aggregation, RE factor calculation and grade model comparisons.



VERSIONS

FLEXiMINE is currently available in three versions:

- **FLEXiMINE Lite** caters for the specific requirements of small mining vessels and shallow water contractors.
- **FLEXiMINE Professional** provides the additional functionality required for the complete management of larger offshore mining vessels.
- **FLEXiMINE Office** allows for the management and tracking of multiple vessels and contractors, handling the flow of production information and providing enterprise wide reporting.



SPATIAL DIMENSION
developing your world

An MS Group Business

Unit 5, Technosquare
42 Morningside Rd, N'Dabeni, 7405
PO Box 38668, Pinelands, 7430
Cape Town, South Africa
Tel: +27 21 531 3132
Fax: +27 21 532 0369
info@spatialdimension.com
www.spatialdimension.com