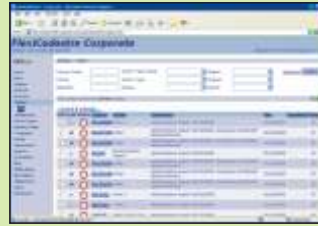


The Complete Cadastral Workflow Management Solution

FlexiCadastré uses a workflow-centric approach to manage and facilitate the complex processes required for the efficient administration of mineral title. Combining a centralised web portal for information management and reporting, advanced document generation, configurable business logic, best-of-breed GIS technology and innovative concepts, FlexiCadastré is a world leader in cadastral management systems.



Value Proposition for Countries

- Revision of Law and Regulations towards International Best Practice
- Simplification of procedures and workflows
- Ensure transparency of cadastral procedures
- Ensure first come, first served principle is applied
- Reduce time to manage applications, renewals and defaulters
- Ensure maximum revenue is derived from the Sector
- Ensure full auditing and tracking

Value Proposition for Companies

- Complete mineral title life cycle management
- Complete government and 3rd party obligation management
- Management consistency across operations

- Reduce time to generate statutory reports
- Accurate live management reporting
- Full integration with other corporate databases

Web Portal

- Advanced wizards for capturing and maintaining mineral title
- Personalised diary showing upcoming tasks for different users
- Email and SMS alerts for important tasks and work flow escalation
- Advanced reporting for required statutory or management documents
- Search, view and manage associated legal agreements and documents
- Advanced multi-parameter searching capabilities (textual and spatial)

- Creates reports in PDF, DOC, XLS and HTML formats for easy viewing
- Complete spatial integration with ESRI's ArcIMS and ArcSDE
- Wizards for onscreen or coordinate entry of spatial data
- Spatial validation of conflicts, overlaps and size according to mining law
- Automatic calculation of surface taxes and rental payments based on area
- Buffering with conflict and/or change detection
- Integrated user level security (Microsoft and Novel)
- Database connectors for financial systems such as for JDE and SAP
- Multi language support

Business Rules

- Workflow-centric and task based approach using Actions
- User created rules and workflow logic based on mining law and regulations for each jurisdiction
- Complete workflow editing tools to configure and test the workflow rules and business logic

Versions

- FlexiCadastré is available in the following versions:
- *FlexiCadastré Country Edition* caters for the needs of national mining cadastre organisations
 - *FlexiCadastré Corporate* caters for the specific needs of large mining and exploration houses
 - *FlexiCadastré Hosted* caters for the specific needs of junior mining and exploration companies

Business Rule Editor

Wizard guides user through adding Jurisdictions, License Types and Business Rules

1. Add License Types to Jurisdiction
2. Add Business Rule for a License Type based on a Trigger Action
3. Define Rule objectives
4. Define Actions to be created by Rule
5. Define scheduling of new Actions
6. Configure Action details and calculations
7. Test Rules
8. Enable Rules

Add New Licence

Wizard guides user through adding a new License based on Business Rules

1. Select Jurisdiction and Licence Type
2. Provide Ownership details
3. Add spatial information
4. Review Actions to be generated by Business Rules

Data Management

Manage existing Licenses

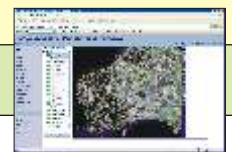
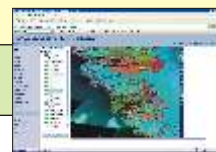
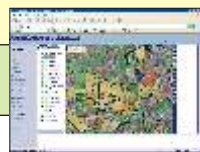
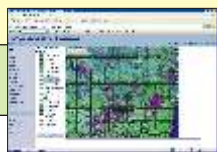
1. License Details
2. Ownership Details
3. Operator Details
4. Associated Legal Agreements
5. Associated Special Conditions
6. Spatial Information
7. Financial Details and Work Commitments
8. Action list
9. Associated Documents

Legal

Approval

1. System generates title document and letter to the Minister
2. Minister grants the license
3. FlexiCadastré generates all the required actions for the lifetime of the license based on the specific rules for the license type

Advanced Reporting



SPATIAL DIMENSION
developing your world

An MS Group Business



**SWEDISH
GEOLOGICAL AB**